



Polyana⁴

with Persona

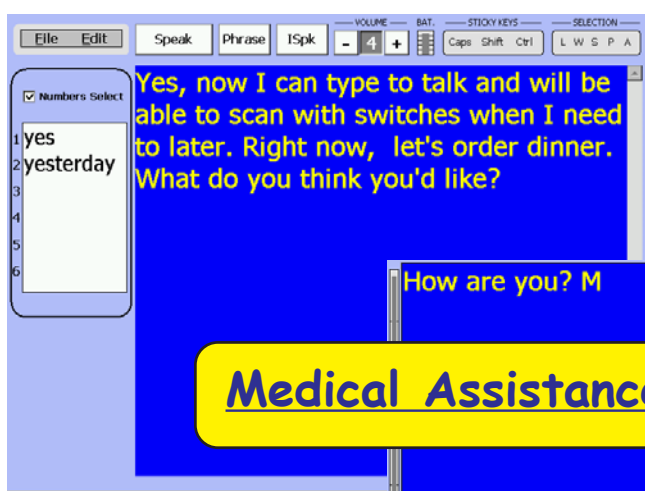
A

TYPING —

SCANNING —

TALKING —

communication aid



Medical Assistance Version



machine		E	A	R	D	U	V	Clear	Undo
move	T	O	I	L	G	K	Up	BS	KB1
my	N	S	F	Y	X	AbEx	Down	Cut	KB3
more	H	C	P	J	'	SpEx	Left	Copy	
make	M	W	Q	,	!	Home	Right	Paste	
Speak	B	Z	.	?	Enter	End	Letter	Sel N	

ZYGO Industries, Inc.
 PO Box 1008
 Portland, OR 97207-1008

TEL: (503) 684-6006 FAX: (503) 684-6011
 U.S.A. / Canada : (800) 234-6006
 E-mail: zygo@zygo-usa.com

<http://www.zygo-usa.com>

**OPERATION
 MANUAL
 ADDENDUM**

070-0064-35 10 JAN 2006
First Edition
First Printing: JAN 2006

Published by: ZYGO Industries, Inc.
PO Box 1008
Portland, OR 97207-1008, U.S.A.
TEL: (503) 684-6006
FAX: (503) 684-6011
E-mail: zygo@zygo-usa.com
Web: <http://www.zygo-usa.com>

COPYRIGHT: ©2003 By ZYGO Industries, Inc.

All rights reserved. No part of this publication may be reproduced without prior permission of ZYGO Industries, Inc.

Trademark Notices: The following are trademarks of ZYGO Industries, Inc.

ZYGO®
Polyana
Persona
AbEx
SpEx

DECtalk is a trademark of Digital Equipment Corporation.

MobilePro is a trademark of NEC Corporation

Windows and Pocket Word are registered trademarks of
Microsoft Corporation.

Canon is a registered trademark of Canon Corporation.

Patent Notice: Some characteristics of the scanning techniques used in *Persona* are protected by U.S. Patent Number 4,558,315 issued to ZYGO Industries, Inc.

NOTICE: ZYGO Industries, Inc. reserves the right to make improvements or changes in the product described in this manual at any time without notice.

OVERVIEW	5
MASHELL	5
<i>FIG: MASHELL MAIN SCREEN</i>	5
PERSONA BUTTON	6
<i>FIG: RUN PERSONA BUTTON</i>	6
CONTROL PANEL	6
<i>ACCESSING THE CONTROL PANEL</i>	6
<i>FIG: CONTROL PANEL ACCESS</i>	6
<i>THE CONTROL PANEL</i>	7
<i>FIG: CONTROL PANEL SCREEN</i>	7
<i>KEYBOARD PROPERTIES</i>	8
<i>FIG: KEYBOARD PROPERTIES, REPEAT</i>	8
<i>FIG: KEYBOARD PROPERTIES, LANGUAGE</i>	8
<i>POWER PROPERTIES</i>	9
<i>FIG: POWER PROPERTIES, BATTERY</i>	9
<i>FIG: POWER PROPERTIES, POWER SCHEMES</i>	9
<i>FIG: POWER PROPERTIES, ADVANCED</i>	10
<i>FIG: POWER PROPERTIES, CARD SLOTS</i>	10
<i>DISPLAY PROPERTIES</i>	11
<i>FIG: DISPLAY PROPERTIES, BACKGROUND</i>	11
<i>FIG: DISPLAY PROPERTIES, APPEARANCE</i>	11
<i>FIG: DISPLAY PROPERTIES, BACKLIGHT</i>	11
<i>STYLUS PROPERTIES</i>	12
<i>VOLUME AND SOUNDS PROPERTIES</i>	12
<i>FIG: VOLUME & SOUNDS PROPERTIES, VOLUME</i>	12
<i>FIG: VOLUME & SOUNDS PROPERTIES, SOUNDS</i>	12
<i>FIG: VOLUME & SOUNDS PROPERTIES, HEADPHONES</i>	13
<i>DATE/TIME PROPERTIES</i>	13
<i>CLOSING CONTROL PANEL</i>	14
<i>FIG: CONTROL PANEL CLOSE BUTTON</i>	14

A complete Netbook Pro User Manual is on the CD supplied with the Polyana⁴. View it on a PC or print it. Printed copies of the Netbook Pro User Manual may be purchased from ZYGO Industries, Inc.

Polyana MA

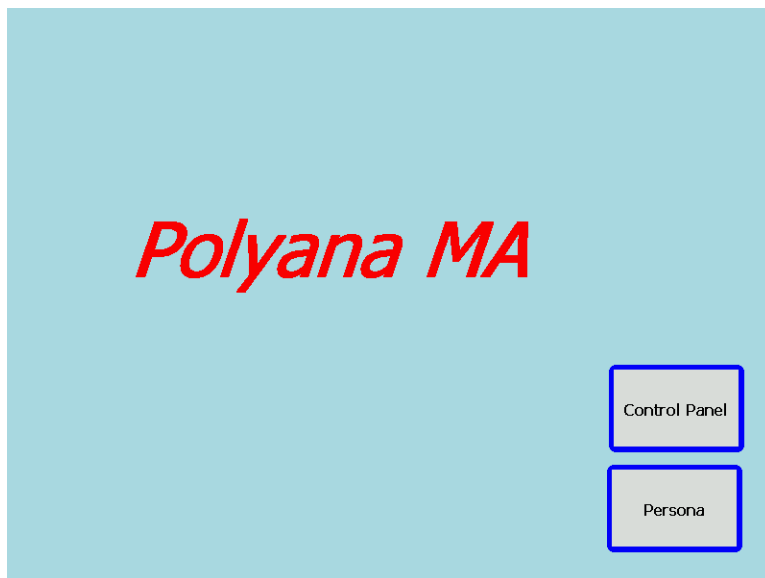
This manual is for the version of *Polyana* that is modified for compliance with medical assistance requirements. It is to be used in conjunction with the *Persona* manual that follows.

Overview

The *Polyana* MA with *Persona* is a dedicated speech generating device, meeting the requirements of various medical assistance agencies. This version of *Polyana* has a customized application, (MAShell), that allows it to be used for speech output communication purposes only. The following explains the MAShell and the functions it provides.

MAShell

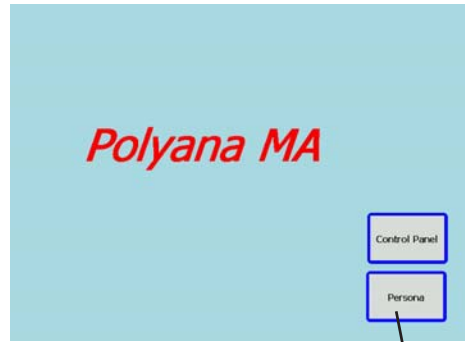
MAShell is always running and ensures that the device is stable and dedicated to speech output. The MAShell program has one main screen. This screen is displayed after exiting *Persona*. The main screen has three buttons. These buttons provide the access to *Persona* and the device settings. The following is a screenshot of MAShell's main screen.



MAShell Main Screen

Persona Button

The Persona Button will run *Persona*. Once *Persona* is executed, the only access to MASHell is by exiting *Persona*.



Run Persona Button

Tap here to run
Persona

Control Panel

The Control Panel button will access the Control Panel for the Polyana MA.

This is where the Keyboard, Volume and Sound settings can be adjusted. Tapping the Control Panel button will bring up the window in which icons for settings are displayed.

Accessing the Control Panel

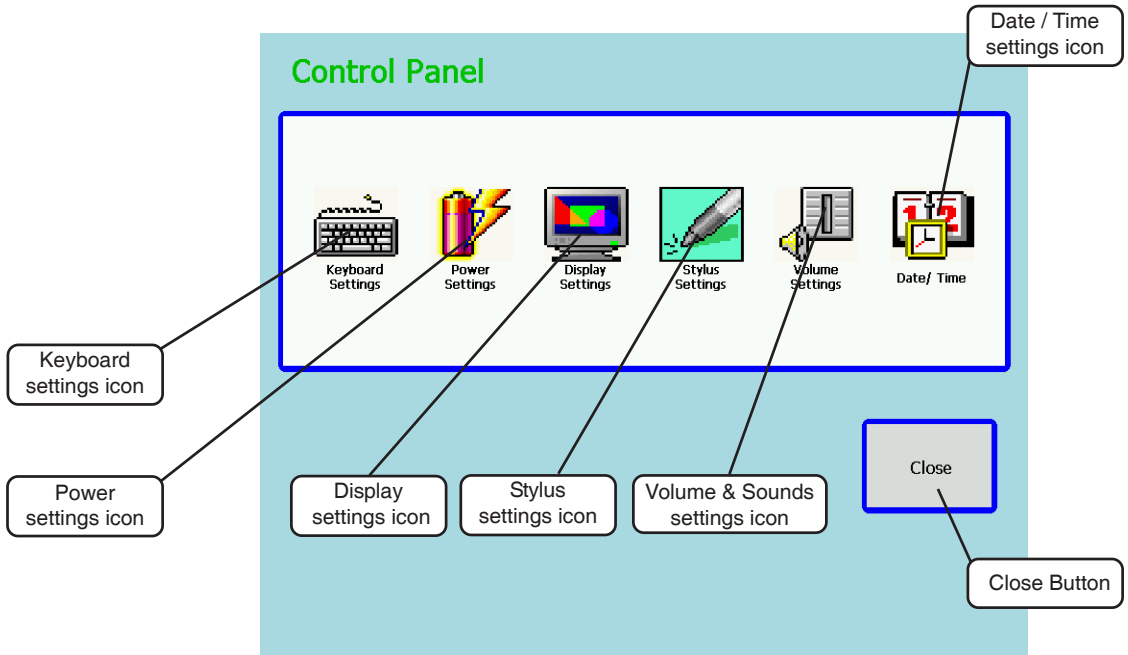
- Tap the Control Panel button.



Control Panel Access

The Control Panel

- The Control Panel displays a Close button and six *settings* options: Keyboard, Power, Display, Stylus, Volume & Sound, and Date/Time. Tap the Close button to exit.



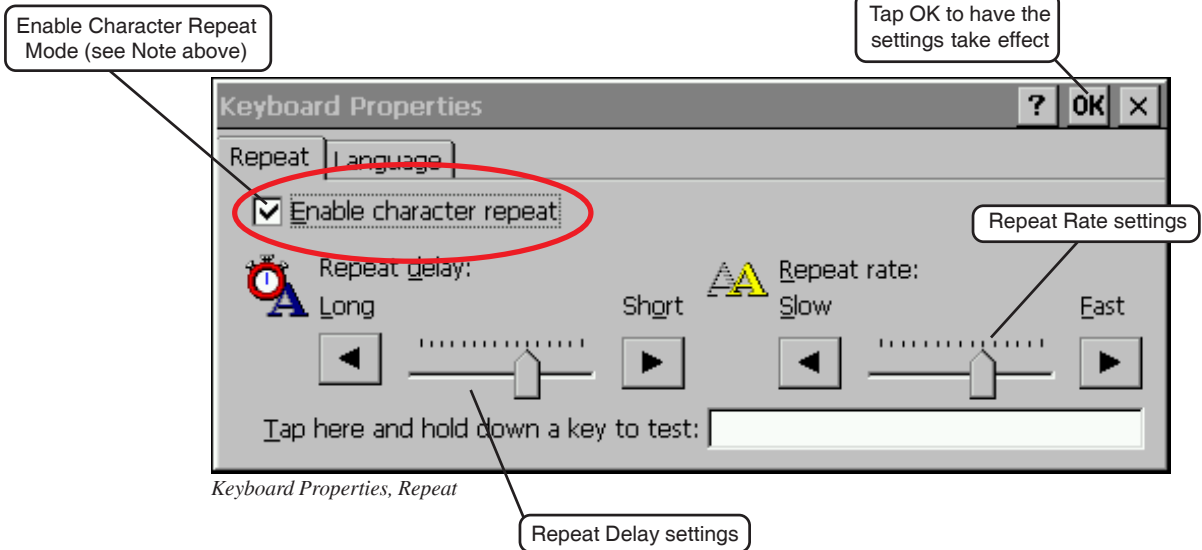
Control Panel Screen

Keyboard Properties

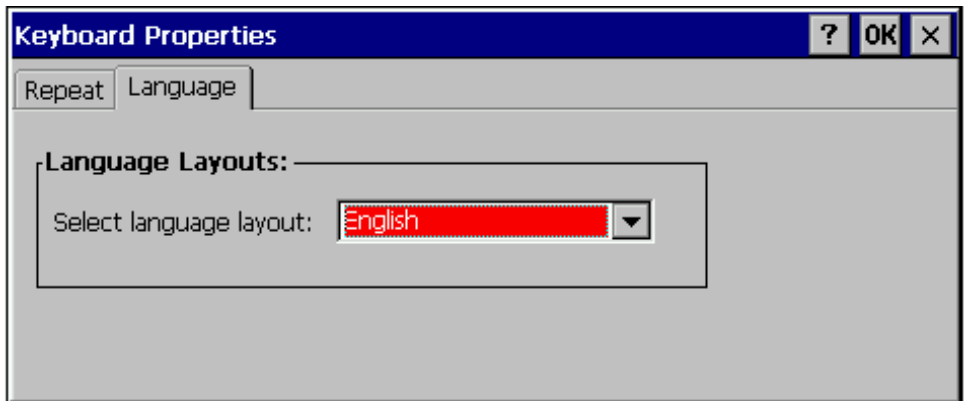
1. Tap on the Keyboard icon. The Keyboard Properties dialog appears. The window will open the Repeat tab, which will allow the following keyboard settings to be adjusted: Enable character repeat, Repeat delay, and Repeat rate.
2. Tap **OK** to save the settings.



NOTE: The Enable character repeat check box should be unchecked for scan users.



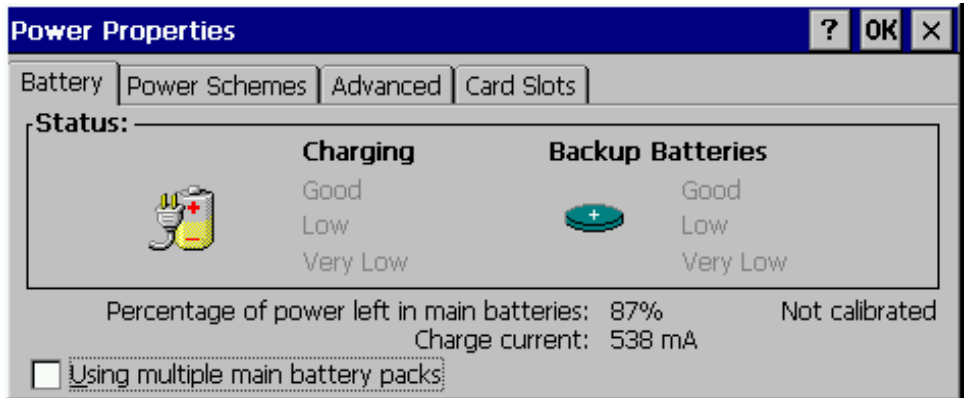
3. Tap the Language tab. Select the English language layout.
4. Tap **OK** to save the settings.



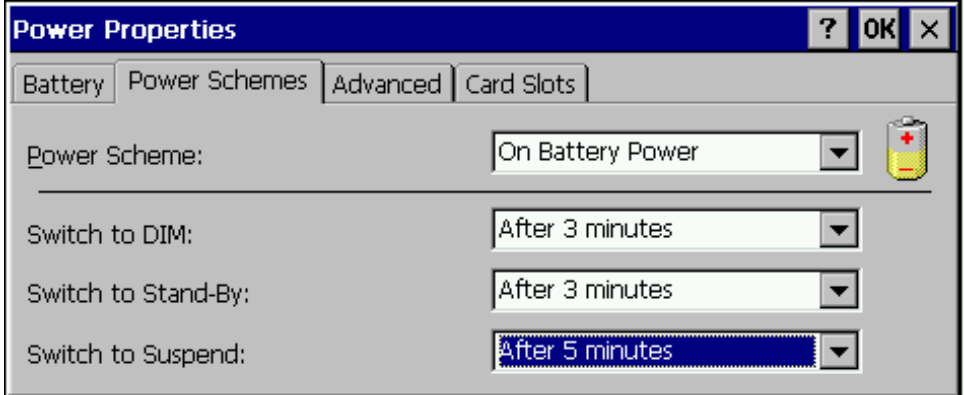
Keyboard Properties, Language Layouts

Power Properties

1. Tap on the Power icon. The Power Properties dialog appears. The window will open the Battery tab.
2. Open each tab and adjust the settings. Details of these dialog boxes are in the Netbook Pro manual.
3. Tap **OK** to save the settings.



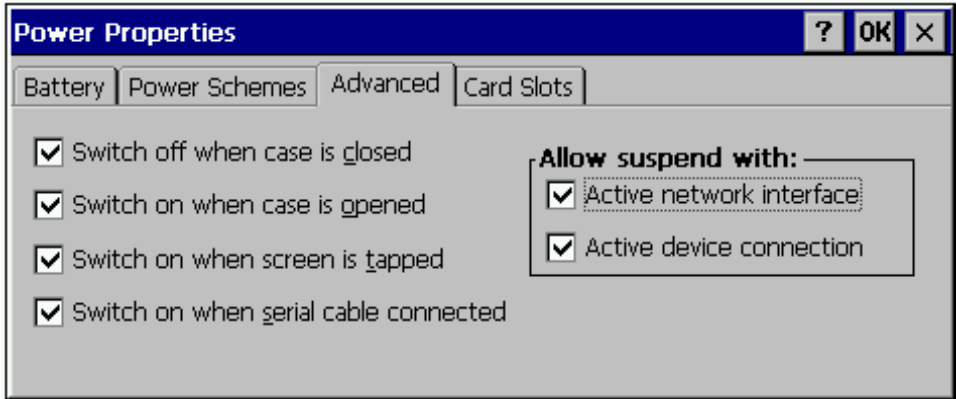
Power Properties, Battery Status



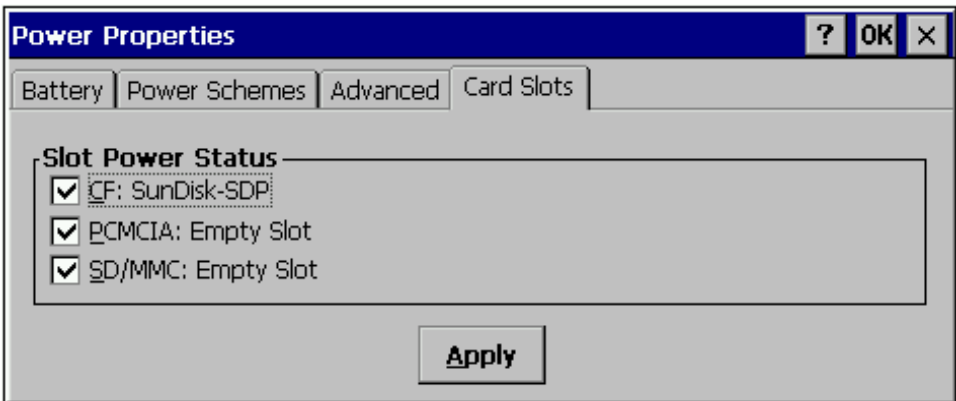
Power Properties, Power Schemes



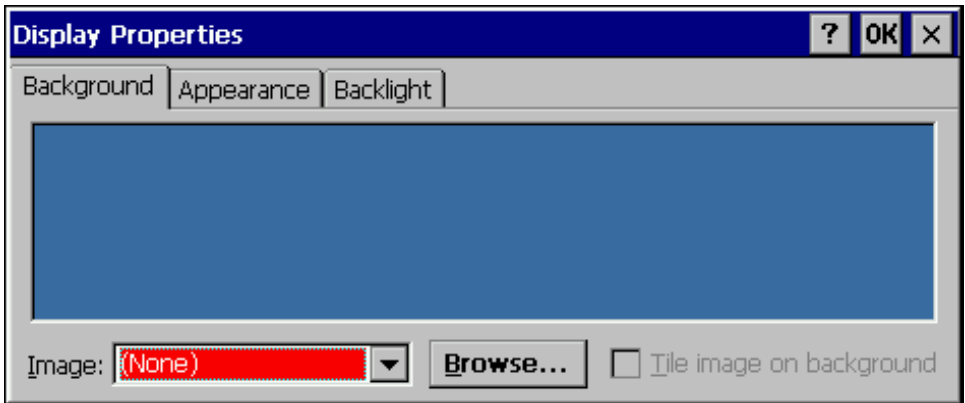
NOTE: The “Switch on when serial cable connected” check box should be **checked** for scan users.



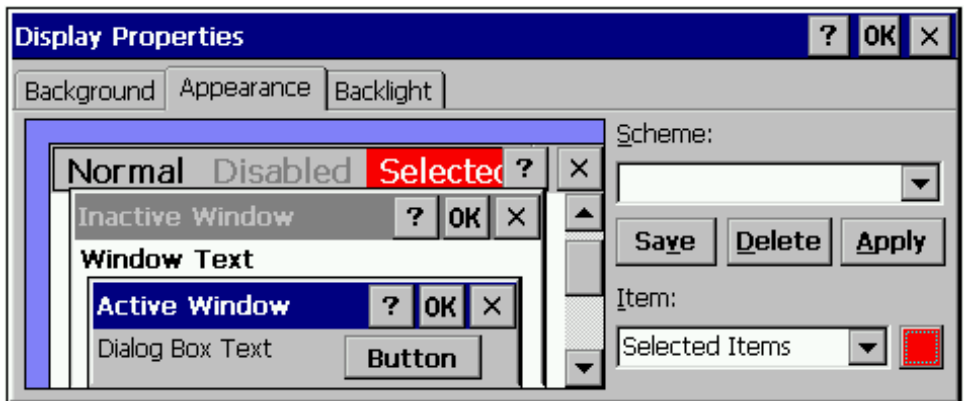
Power Properties, Advanced



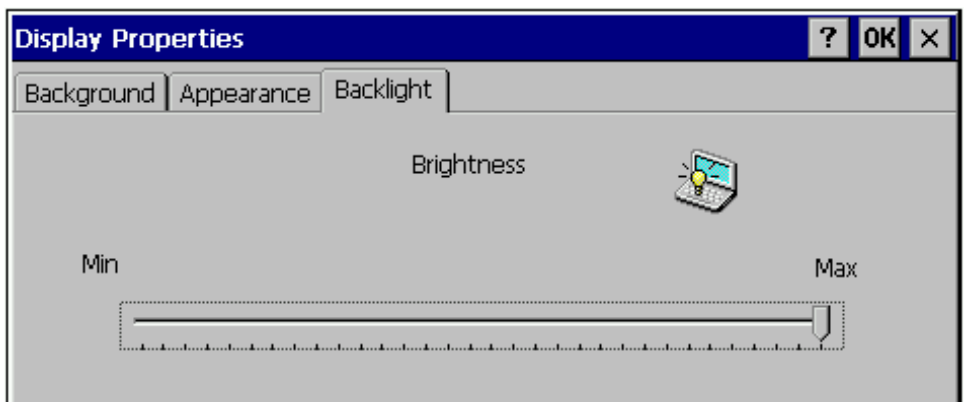
Power Properties, Card Slots



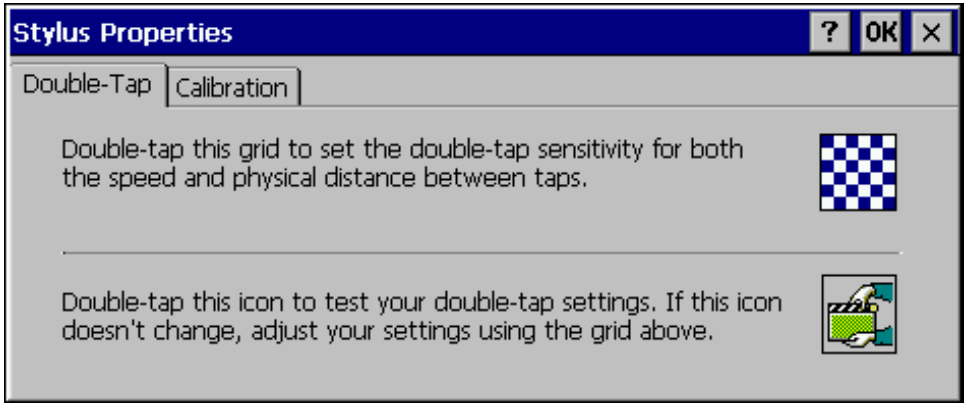
Display Properties, Background



Display Properties, Appearance



Display Properties, Backlight



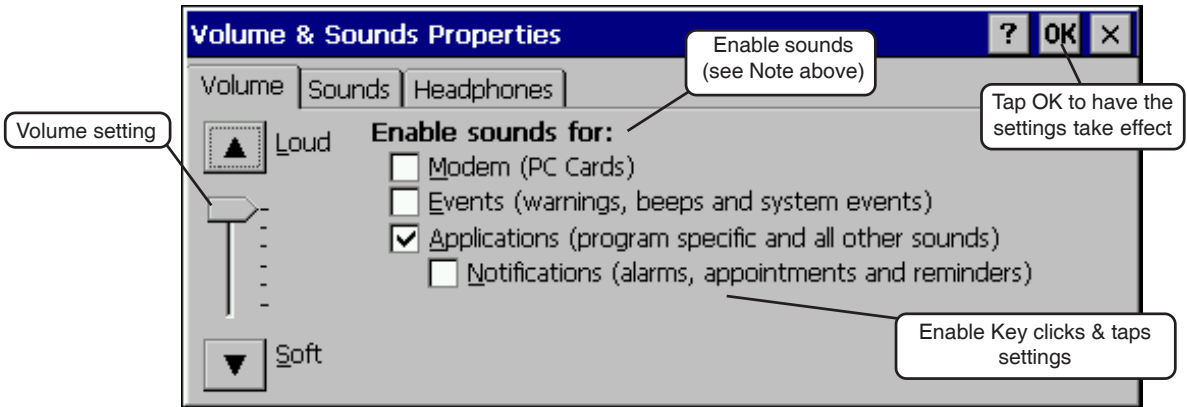
Stylus Properties

Volume and Sound Properties

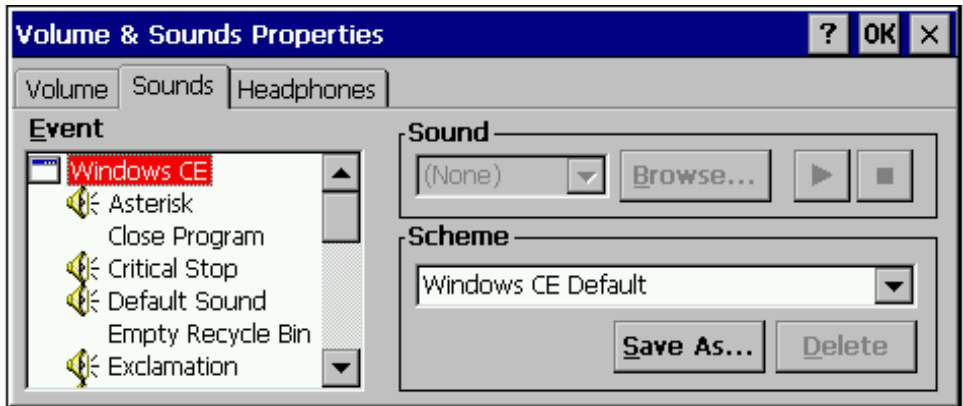
1. Click the Volume and Sounds icon. The Volume and Sounds dialog appears. The volume, enable Key clicks, and enable event sounds may be adjusted.
2. Tap **OK** to save the settings.



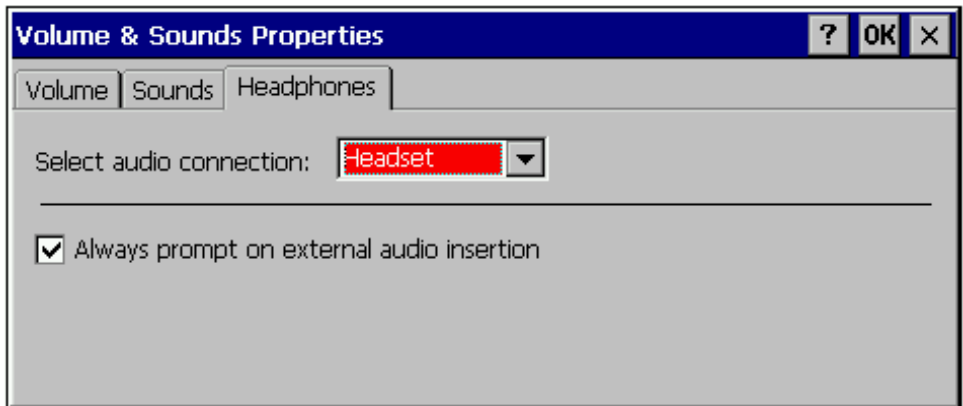
NOTES: The “Applications” properties should **not be** disabled. This window may appear differently in different units.



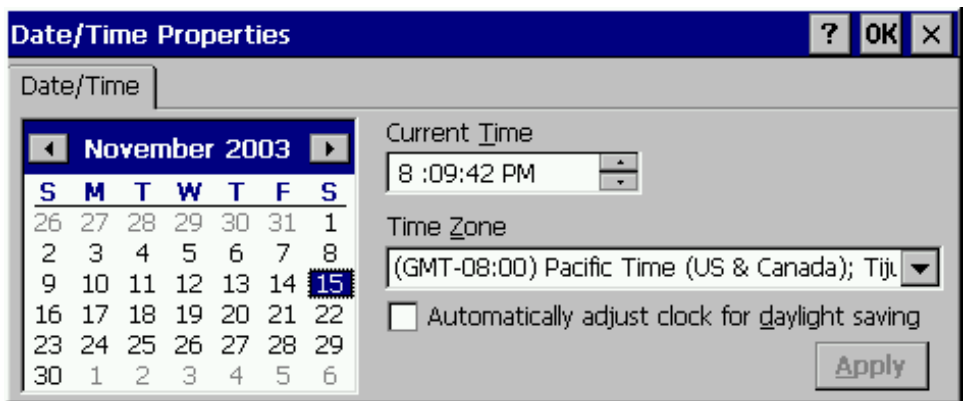
Volume & Sounds Properties, Volume



Volume & Sounds Properties, Sounds



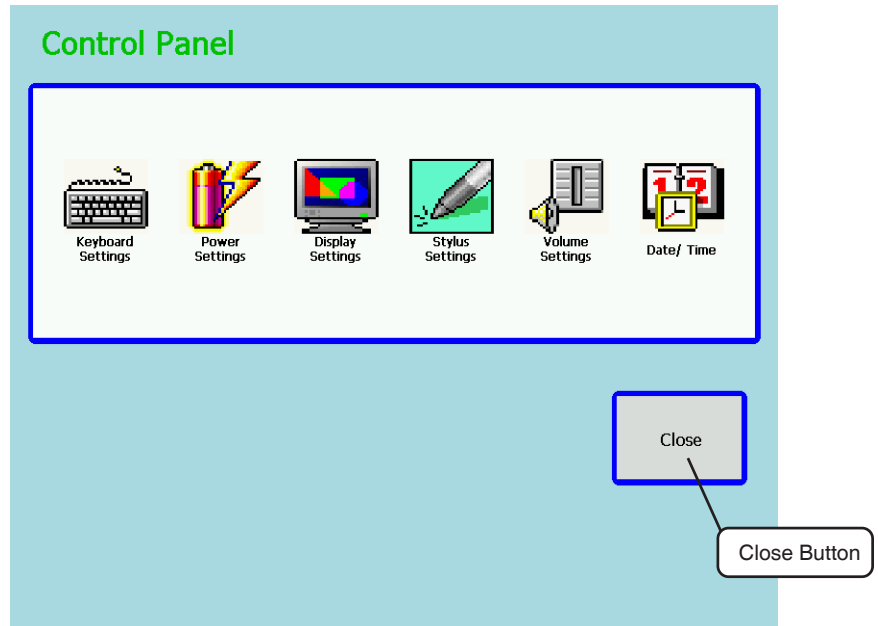
Volume & Sounds Properties, Headphones



Date/Time Properties

Closing Control Panel

- Tap the Close button to exit the Control Panel and return to the MASHell.



Control Panel Close Button