



# GridPlayer

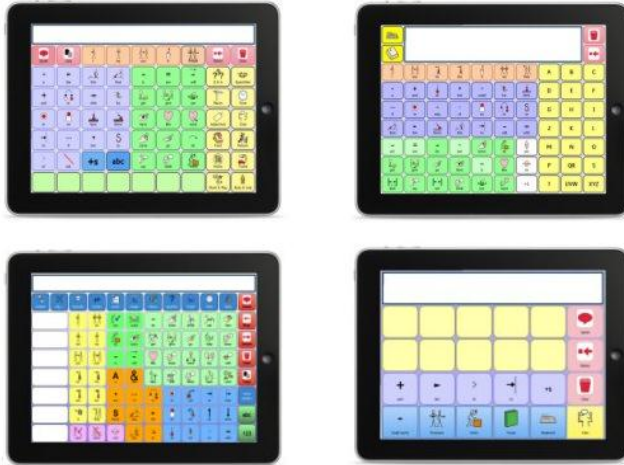


Grid Player for iOS version 1.0

© Sensory Software International Ltd 2011

## About Grid Player

Grid Player is an Alternative and Augmentative Communication (AAC) App that helps people who cannot speak or who have unclear speech to communicate.



You can use your own grids from The Grid 2 with Grid Player. You can also use the grids included with Grid Player without The Grid 2.

## How to install Grid Player

Open the App Store on your iOS device, and search for Grid Player. Click **Install** and enter your Apple (iTunes) password if requested.

## Welcome to Grid Player

When you start Grid Player for the first time, you will see the Welcome screen.



### Signing in to your account

If you want to use your own grids, you need to sign in to your Online Grids account by selecting **Log In**. If you don't have an account, select **Create New Account**.

## Grid Explorer

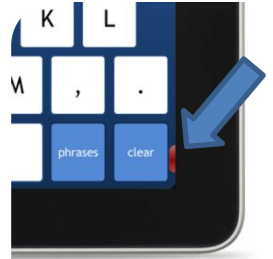
Grid Explorer allows you to select which grid set you want to use. You can also refresh the grids on Grid Player and access the Settings menu.



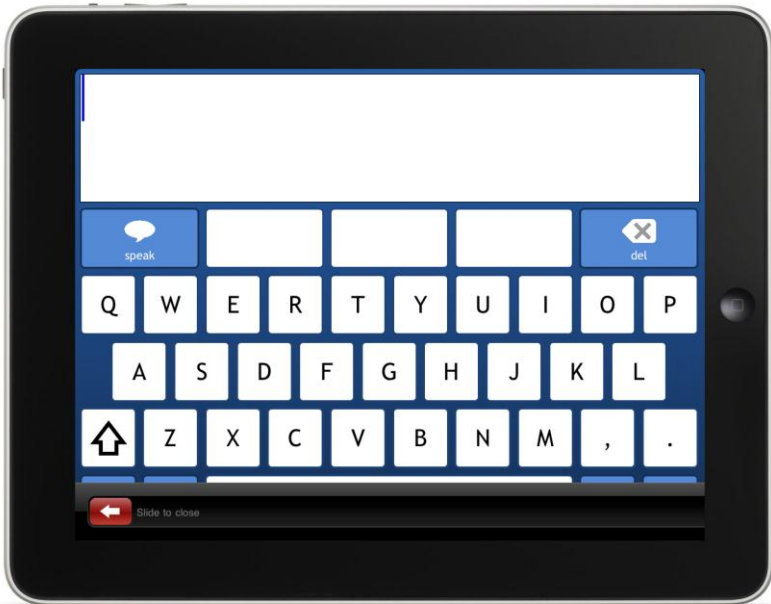
Tap one of the grid set logos to open it, and you can start talking.

## Returning to Grid Explorer

To close a grid set, slide the red button in the bottom right of the screen across to the left.



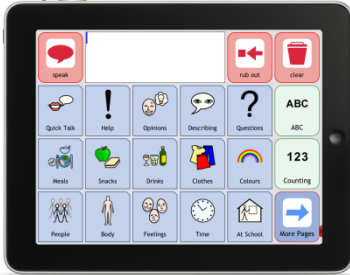
The grid set will close and you will return to Grid Explorer.



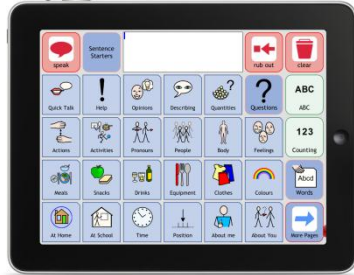
# About the Grid Sets

Grid Player includes three communication grid sets.

## Symbol Talker A



## Symbol Talker B



Symbol Talker is designed for people who use symbols to identify what they want to say. Symbol Talker A is an introductory grid set, and Symbol Talker B includes more vocabulary.

## Text Talker

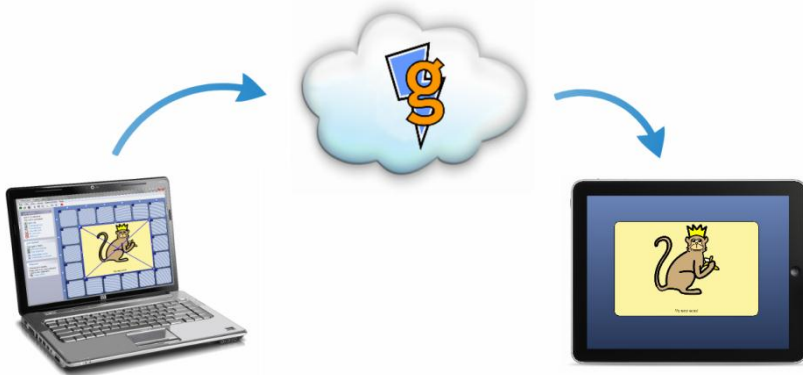


Text Talker is for people who can type what they want to say. The keyboard uses prediction to help you type faster, and there are lots of stored phrases for instant speech.

## Making Changes to Grids

Using The Grid 2 on your PC unlocks the potential of Grid Player:

- Make changes to the Symbol Talker and Text Talker grid sets
- Access 100s of other grids that are available for The Grid 2
- Create your own grids



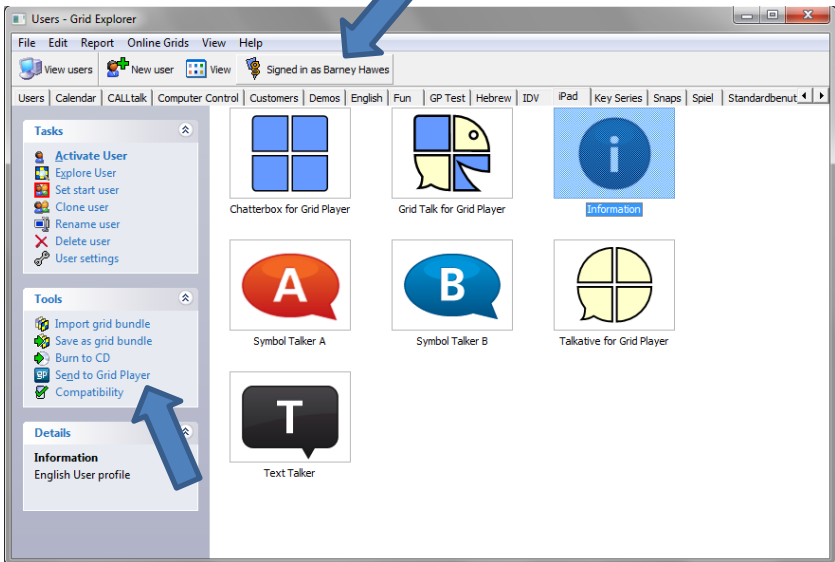
The Grid 2

Grid Player

Your grids are sent from The Grid 2 to Grid Player via the internet and our cloud server, Online Grids.

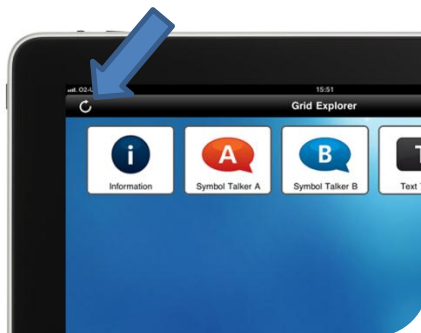
## Sending Grids to Grid Player

You need to sign in to your Online Grids account in The Grid 2. If you do not already have an account, you can create it in Grid Player.



Once you have signed in, you can select any grid set and then select **Send to Grid Player**.

Select the refresh button in Grid Explorer and your grid set will be available in Grid Player.





## The Settings Menu

The settings menu in Grid Explorer allows you to access the basic options for Grid Player. To open the settings menu, tap the settings button in Grid Explorer.



### Choose voice

You can select which voice you want to use with Grid Player.

### About Grid Player

This menu gives information about the version of Grid Player you are using, and provides a space for you to send feedback about Grid Player.

### Support

The support menu provides information that will be useful if you are having any problems with Grid Player.

## The Settings App

The iOS settings app allows you to configure the advanced options for Grid Player.

To see the Grid Player settings, select the Grid Player item from the settings menu on the left.



### Settings Button

Turn off the settings button to prevent the settings being changed within Grid Explorer.

### Slider to Close Grids

Turn off the slider to stay in one grid set and prevent access to Grid Explorer.

## VoiceOver

To access the VoiceOver settings, open the Settings App and select **General > Accessibility > VoiceOver**.



When VoiceOver is turned on, Grid Player will speak menu items when they are touched.

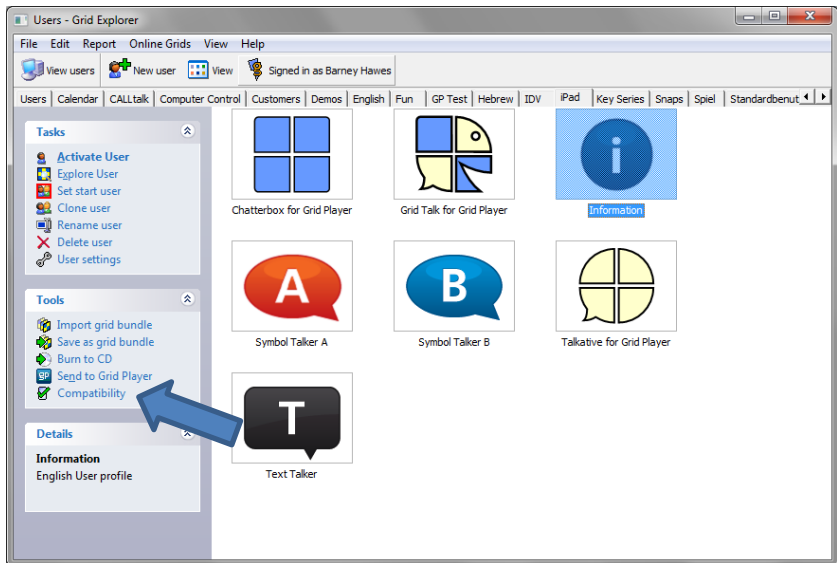
Double-tap anywhere on the screen to activate the most recently spoken item.

# Compatibility

Some features of The Grid 2 are not available for Grid Player.

## Compatibility mode

Select **Compatibility** from Grid Explorer in The Grid 2, and select which device you want to use for compatibility mode. If you want to set the window to the same size as your device, select the option from the **Monitors** tab.



In compatibility mode, The Grid 2 will only allow features that are supported in Grid Player. When you edit, you will only see commands and other features that are available for Grid Player.

## Compatibility report

The compatibility report lists all the features of a grid set that are not compatible with Grid Player. Select **Reports > Compatibility Report** from the menu to see the report.

## Grid Player Features

Grid Player does not support all the features available in The Grid 2; just the ones essential to communication.

The commands available in Grid Player 1.0 are:

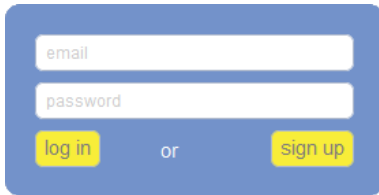
- Type – add a letter, word or sentence to the sentence bar
- Clear – clear the sentence bar
- Speak – speak the text in the sentence bar
- Jump to – open another grid
- Jump back – go back to the previous grid
- Jump home – go to the home grid
- More auto content – show more word list items
- Copy to clipboard – copy the text in the sentence bar

The following features are available in Grid Player

- Word list auto content – for grids with lots of words
- Prediction auto content – suggest words as you type
- Self-closing grids – grids that jump back after you select a cell

## Online Grids Website

The Online Grids website [grids.sensorysoftware.com](https://grids.sensorysoftware.com) allows you to manage your account.

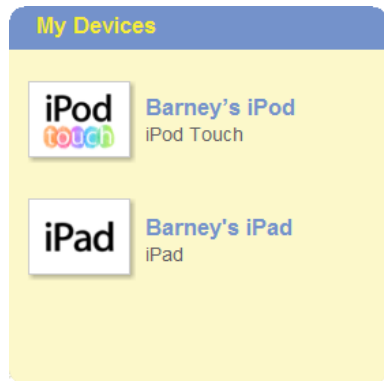


A blue rectangular form with two white input fields. The first field is labeled 'email' and the second is labeled 'password'. Below the fields are two yellow buttons: 'log in' on the left and 'sign up' on the right, with the word 'or' centered between them.

Enter your username (email address) and password to log in to the site.

You can see the devices that are connected with your account on your profile page.

Select a device to see your grid sets. You can also delete grid sets from your account.



Some grid sets require a licence to be activated for a device before they can be used.

## Frequently Asked Questions

How do I use paid-for content on Grid Player

- You cannot use paid-for symbols or grid sets with Grid Player. However, you can use the Widgit and SymbolStix symbols, and a wide range of free grid sets with Grid Player.

How do I delete a grid set that I have sent to Grid Player?

- Sign in to the Online Grids website with your username and password. Select the grid set you wish to remove, and click the Delete button.

How do I remove a device from my account?

- To remove a device you need to deauthorise Grid Player on that device and sign in with a different username.

What are the limits on my Grids Online account?

- You can connect up to three devices to your account.
- You can upload up to 10 grid sets to your account.
- Each grid set can contain up to 350 grids. The total size of the grid set must not exceed 100mb, and no file may be larger than 10mb.

## Contact Us

Our website is [www.sensorysoftware.com](http://www.sensorysoftware.com).

For help and support, please email [support@sensorysoftware.com](mailto:support@sensorysoftware.com).